

Macchine estrusione soffiaggio elettriche • Corsa 1000÷1300 mm
Electric extrusion blow moulding machines • Stroke 1000÷1300 mm
Maquinás de extrusión soplado electricas • Carrera 1000÷1300 mm
Machines d'extrusion soufflage electriques • Course 1000÷1300 mm



ITALIAN TECHNOLOGY



FORZA DI CHIUSURA MOULD CLAMPING FORCE FUERZA DE CIERRE FORCE DE FERMETURE	KN	500
---	-----------	------------

Carro singolo / Single station / Estación simple / Chariot simple	Carro doppio / Double station / Estación doble / Chariot double
--	--

PB50ES-1000	PB50ES-1300	PB50ED-1000	PB50ED-1300
-------------	-------------	-------------	-------------

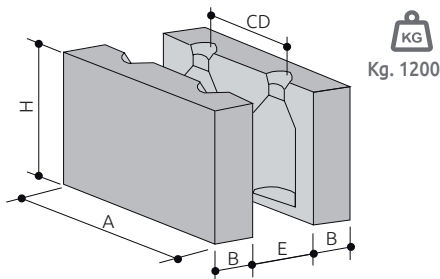
DATI GENERALI / GENERAL DATA / DATOS GENERALES / DONNÉES GÉNÉRALES

Stampi / Moulds / Moldes / Moules	n°	1	1	2	2
Corsa / Stroke / Carrera / Course	mm	1000	1300	1000	1300
Ciclo a vuoto / Dry cycle time / Ciclo en vacío / Cadence à vide	s	4	4,3	4	4,3
Potenza motore chiusura / Motor clamping power / Potencia motor de cierre / Puissance moteur de fermeture	kW	9,5		9,5	

CONSUMI / CONSUMPTIONS / CONSUMOS / CONSOMMATIONS

Pressione aria / Air pressure / Presión aire / Pression air	bar	8 ÷ 10		8 ÷ 10	
Consumo aria / Air consumption / Consumo aire / Consommation air	Nl/min	2500		5000	
Pressione acqua / Cooling water pressure / Presión agua / Pression eau	bar	3 ÷ 5		3 ÷ 5	
Raffreddamento stampi HDPE / Mould cooling HDPE / Enfriamiento moldes HDPE / Refroidissement moules HDPE	KJ/Kg	650		650	

STAMPO / MOULD / MOLDE / MOULE



	PB50ES-1000	PB50ES-1300	PB50ED-1000	PB50ED-1300
A mm	990	1290	990	1290
H mm	680-820		680-820	
B mm	225÷230		225÷230	
E mm	420		420	

CD INTERASSE USCITE / CENTER DISTANCE / DISTANCIA ENTRE CENTROS / ENTRAXE FILIÈRES

N. Cav	2	3	4	5	6	7	8	9	10	11	12
C = 1000	460	310	230	180	150	130	110	100	90	85	75
C = 1300	610	410	300	240	200	170	150	135	120	110	100

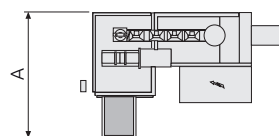
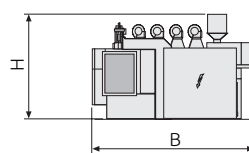
C = Corsa / Stroke / Carrera / Course

ESTRUSORE / EXTRUDER / EXTRUSORA / EXTRUDEUSE

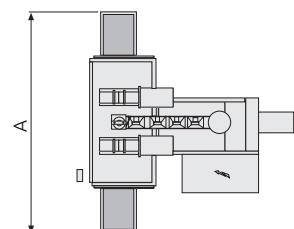
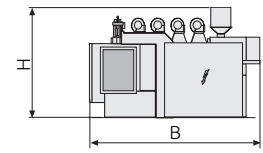
	E80/25	E90/25	E100/28	E120/28	E135/28	
Diametro vite / Screw diameter / Diámetro husillo / Diamètre vis	mm	80	90	100	120	135
Lunghezza vite / Screw length / Largo husillo / Longueur vis	L/D	25	25	28	28	28
Potenza motore / Motor power / Potencia motor / Puissance moteur	kW	44	55	113	120	120
Plastificazione HDPE / HDPE plasticizing / Plastificación HDPE / Plastification HDPE	kg/h	150	190	300	400	500

DIMENSIONI E PESO / DIMENSIONS AND WEIGHT / DIMENSIONES Y PESO / DIMENSIONS ET POIDS

	Carro singolo / Single station / Estación simple / Chariot simple	Carro doppio / Double station / Estación doble / Chariot double
	A x B x H	A x B x H
C = 1000	6500 x 7200 x 5500	8300 x 9000 x 5500
	28000 kg	38000 kg
C = 1300	7100 x 7200 x 5500	10100 x 9000 x 5500
	30000 kg	35000 kg



Carro singolo / Single station / Estación simple / Chariot simple



Carro doppio / Double station / Estación doble / Chariot double