

Macchine estrusione soffiaggio elettriche • Corsa 700-1400 mm
Electric extrusion blow moulding machines • Stroke 700-1400 mm
Maquinás de extrusión soplado electricas • Carrera 700÷1400 mm
Machines d'extrusion soufflage electriques • Course 700÷1400 mm



ITALIAN TECHNOLOGY



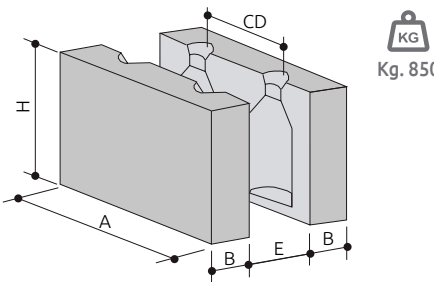
FORZA DI CHIUSURA MOULD CLAMPING FORCE FUERZA DE CIERRE FORCE DE FERMETURE	KN	300
---	-----------	------------

Carro singolo / Single station / Estación simple / Chariot simple			Carro doppio / Double station / Estación doble / Chariot double		
PB30ES-700	PB30ES-1000	PB30ES-1400	PB30ED-700	PB30ED-1000	PB30ED-1400

DATI GENERALI / GENERAL DATA / DATOS GENERALES / DONNÉES GÉNÉRALES							
Stampi / Moulds / Moldes / Moules	n°	1	1	1	2	2	2
Corsa / Stroke / Carrera / Course	mm	700	1000	1400	700	1000	1400
Ciclo a vuoto / Dry cycle time / Ciclo en vacío / Cadence à vide	s	2,8	2,9	3,4	2,8	2,9	3,4
Potenza motore chiusura / Motor clamping power / Potencia motor de cierre / Puissance moteur de fermeture	kW	4,9			4,9		

CONSUMI / CONSUMPTIONS / CONSUMOS / CONSOMMATIONS							
Pressione aria / Air pressure / Presión aire / Pression air	bar	8 ÷ 10			8 ÷ 10		
Consumo aria / Air consumption / Consumo aire / Consommation air	Nl/min	2500			5000		
Pressione acqua / Cooling water pressure / Presión agua / Pression eau	bar	3 ÷ 5			3 ÷ 5		
Raffreddamento stampi HDPE / Mould cooling HDPE / Enfriamiento moldes HDPE / Refroidissement moules HDPE	KJ/Kg	650			650		

STAMPO / MOULD / MOLDE / MOULE	PB30ES-700	PB30ES-1000	PB30ES-1400	PB30ED-700	PB30ED-1000	PB30ED-1400
A mm	720	1020	1420	690	990	1390
H mm	700	500	500	700	500	500
B mm	200÷230			200÷230		
E mm	420			420		



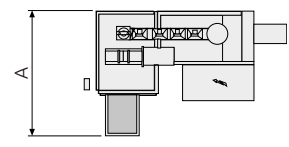
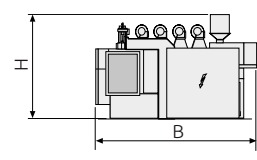
CD	INTERASSE USCITE / CENTER DISTANCE / DISTANCIA ENTRE CENTROS / ENTRAXE FILIÈRES											
N. Cav	2	3	4	5	6	7	8	9	10	11	12	
C = 700	310	210	150	125	100	90	75	70	60	-	-	
C = 1000	460	310	230	180	150	130	110	100	90	85	75	
C = 1400	660	440	330	260	220	180	160	140	130	120	110	

C = Corsa / Stroke / Carrera / Course

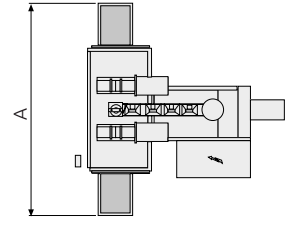
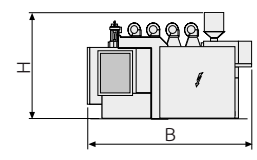
ESTRUSORE / EXTRUDER / EXTRUSORA / EXTRUDEUSE	E80/25	E90/25	E100/28	E120/28	
Diametro vite / Screw diameter / Diámetro husillo / Diamètre vis	mm	80	90	100	120
Lunghezza vite / Screw length / Largo husillo / Longueur vis	L/D	25	25	28	28
Potenza motore / Motor power / Potencia motor / Puissance moteur	kW	44	55	113	120
Plastificazione HDPE / HDPE plasticizing / Plastificación HDPE / Plastification HDPE	kg/h	150	190	300	400

DIMENSIONI E PESO / DIMENSIONS AND WEIGHT / DIMENSIONES Y PESO / DIMENSIONS ET POIDS

	Carro singolo / Single station / Estación simple / Chariot simple	Carro doppio / Double station / Estación doble / Chariot double
	A x B x H	A x B x H
C = 700	5700 x 6500 x 4000 13200 kg	6300 x 8200 x 4000 23800 kg
C = 1000	5700 x 6500 x 4000 13200 kg	6300 x 8200 x 4000 23800 kg
C = 1400	5700 x 6500 x 4000 13200 kg	6300 x 8200 x 4000 23800 kg



Carro singolo / Single station / Estación simple / Chariot simple



Carro doppio / Double station / Estación doble / Chariot double

Dati soggetti a variazioni senza preavviso / data subjects to modifications without notice / données sujettes a variations sans preavis / datos sujetos a variaciones sin preaviso