

Macchine estrusione soffiaggio elettriche • Corsa 500÷800 mm
Electric extrusion blow moulding machines • Stroke 500÷800 mm
Maquinás de extrusión soplado electricas • Carrera 500÷800 mm
Machines d'extrusion soufflage electriques • Course 500÷800 mm



ITALIAN TECHNOLOGY



FORZA DI CHIUSURA MOULD CLAMPING FORCE FUERZA DE CIERRE FORCE DE FERMETURE	KN	220
---	-----------	------------

Carro singolo / Single station /
Estación simple / Chariot simple

Carro doppio / Double station /
Estación doble / Chariot double

	PB22ES-500	PB22ES-700	PB22ES-800	PB22ED-500	PB22ED-700	PB22ED-800
--	------------	------------	------------	------------	------------	------------

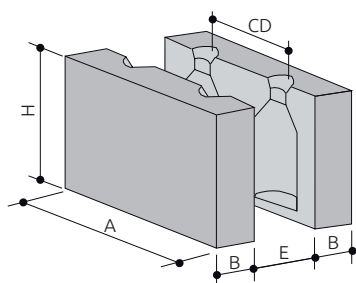
DATI GENERALI / GENERAL DATA / DATOS GENERALES / DONNÉES GÉNÉRALES

Stampi / Moulds / Moldes / Moules	n°	1	1	1	2	2	2
Corsa / Stroke / Carrera / Course	mm	500	700	800	500	700	800
Ciclo a vuoto / Dry cycle time / Ciclo en vacío / Cadence à vide	s	3	3,6	3,6	3	3,6	3,6
Potenza motore chiusura / Motor clamping power / Potencia motor de cierre / Puissance moteur de fermeture	kW	6,8			6,8		

CONSUMI / CONSUMPTIONS / CONSUMOS / CONSOMMATIONS

Pressione aria / Air pressure / Presión aire / Pression air	bar	8 ÷ 10			8 ÷ 10		
Consumo aria / Air consumption / Consumo aire / Consommation air	Nl/min	2000			4000		
Pressione acqua / Cooling water pressure / Presión agua / Pression eau	bar	3 ÷ 5			3 ÷ 5		
Raffreddamento stampi HDPE / Mould cooling HDPE / Enfriamiento moldes HDPE / Refroidissement moules HDPE	KJ/Kg	650			650		

STAMPO / MOULD / MOLDE / MOULE



	PB22ES-500	PB22ES-700	PB22ES-800	PB22ED-500	PB22ED-700	PB22ED-800
A mm	490	690	790	490	690	790
H mm	420			420		
B mm	130÷135			130÷135		
E mm	270			270		

CD INTERASSE USCITE / CENTER DISTANCE / DISTANCIA ENTRE CENTROS / ENTRAXE FILIÈRES

N. Cav	2	3	4	5	6	7	8	9	10	11	12
C = 500	210	140	100	85	70	60	50	-	-	-	-
C = 700	310	210	150	125	100	90	75	70	60	-	-
C = 800	360	240	180	140	120	100	90	80	70	65	60

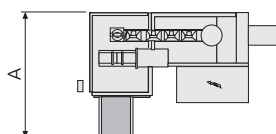
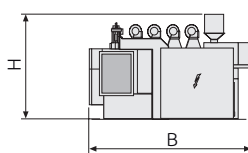
C = Corsa / Stroke / Carrera / Course

ESTRUSORE / EXTRUDER / EXTRUSORA / EXTRUDEUSE

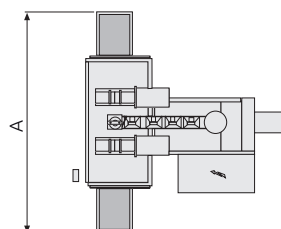
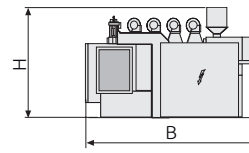
	E70/25	E80/25	E90/25	E100/28	E120/28	E135/28	
Diametro vite / Screw diameter / Diámetro husillo / Diamètre vis	mm	70	80	90	100	120	135
Lunghezza vite / Screw length / Largo husillo / Longueur vis	L/D	25	25	25	28	28	28
Potenza motore / Motor power / Potencia motor / Puissance moteur	kW	37	44	55	113	120	120
Plastificazione HDPE / HDPE plasticizing / Plastificación HDPE / Plastification HDPE	kg/h	110	150	190	300	400	500

DIMENSIONI E PESO / DIMENSIONS AND WEIGHT / DIMENSIONES Y PESO / DIMENSIONS ET POIDS

	Carro singolo / Single station / Estación simple / Chariot simple	Carro doppio / Double station / Estación doble / Chariot double
	A x B x H	A x B x H
C = 500	5000 x 6100 x 4100 14000 kg	4600 x 6620 x 4100 21000 kg
C = 700	5300 x 6800 x 4100 14000 kg	7000 x 7700 x 4100 21000 kg
C = 800	5300 x 6800 x 4100 14000 kg	7000 x 7700 x 4100 21000 kg



Carro singolo / Single station / Estación simple / Chariot simple



Carro doppio / Double station / Estación doble / Chariot double